

# Countleader BF 100 Cell Counter



- ◆ Auto-focus with the classic trypan blue staining method
- ◆ Rapid analysis: 8 samples in just 90 seconds!
- ◆ Minimal sample volume required: only 15  $\mu$ L
- ◆ No cleaning, calibration, or maintenance required
- ◆ Compliant with 21 CFR Part 11

**The Countleader BF 100** utilizes the trypan blue exclusion method, integrating advanced optical systems and intelligent image recognition technology. It can simultaneously analyze 8 samples with precision, providing accurate information on total cell count, concentration, viability, diameter, aggregation ratio, and morphology within 1–2 minutes.

## Simple Operation Workflow

1

### Sample Staining

Simply mix 10  $\mu$ l of cell samples with 10  $\mu$ l of the Trypan Blue staining solution.



2

### Load and Press RUN

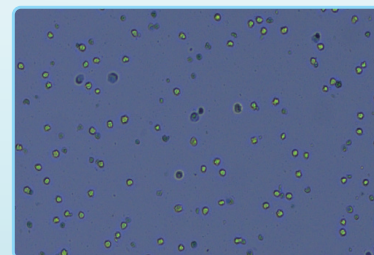
Only 15  $\mu$ l of stained sample is required. The advanced FL8 slides are compatible with multichannel pipettes. Insert the FL8 slides into the Countleader BF100 slot and press RUN to start the counting process.



3

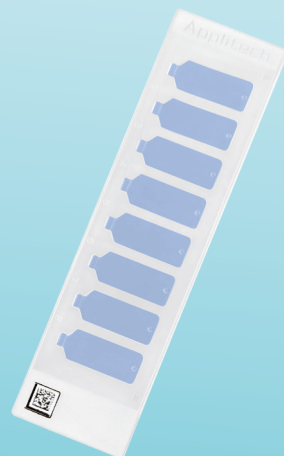
### Fast and Automated Analysis

The BF100 performs cell counting quickly with automatic focus and analysis technology. It can count 8 samples in under 2 minutes.



## Multi-Chamber FL8-Slides with Unique Code

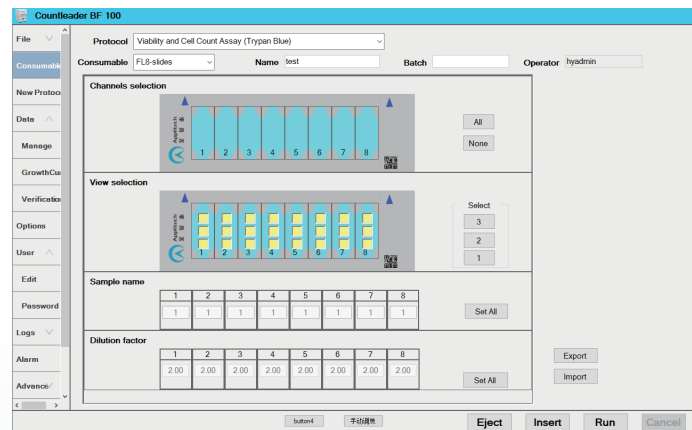
Each FL8-Slide is equipped with a unique QR code to accurately record and calibrate the analysis volume of each well, ensuring more precise results. With minimal sample volume, high-precision rapid cell counting for 8 samples can be completed in just 2 minutes.



# Powerful and Flexible Software

## Easy Software Operation

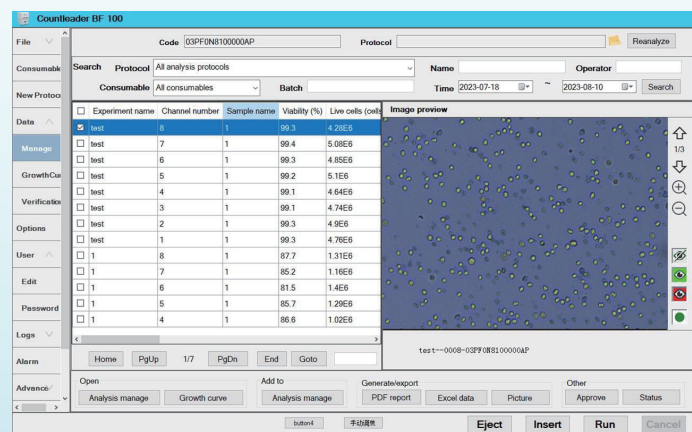
- ✓ Detection channels can be selected accordingly.
- ✓ Larger analysis volume reduces statistical errors; choose from 1–3 visual fields for analysis.
- ✓ Separate sample IDs enable easy result browsing and searchability
- ✓ Automatic compensation for dilution factor ensures accurate results



## Data & Analysis

The data can be searched by experiment name, time, and sample ID.

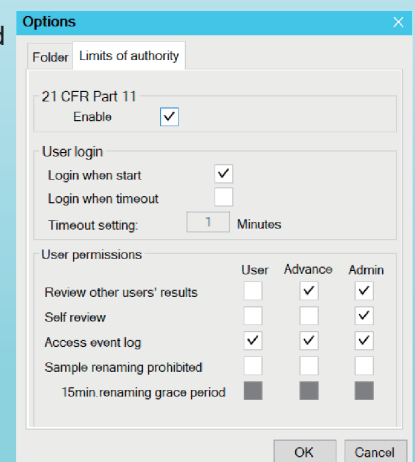
- ✓ Results are presented in various formats, with intuitive data showing total cell concentration, viable and dead cell concentration, cell viability, cell diameter, and aggregated cell ratio
- ✓ Cell growth curves provide insight into cell growth trends
- ✓ Data can be exported in PDF, Excel, or TIFF formats for further analysis and reporting



## User Management

The BF100 features a strict three-level user management system with defined permissions, fully compliant with 21 CFR Part 11 for GMP regulations.

- ✓ Access protected by user-specific passwords
- ✓ Customizable user permissions for enhanced control
- ✓ Audit Trail
- ✓ Electronic Records & Signatures



# IQ/OQ/PQ Verification Services

IQ, OQ, and PQ (3Q) certified services are available, with a variety of concentration beads and accompanying verification documents for purchase. The 3Q operating manuals ensure consistent procedures, generate standardized PDF reports, fully document sample usage, and meet audit trail requirements.



## Application

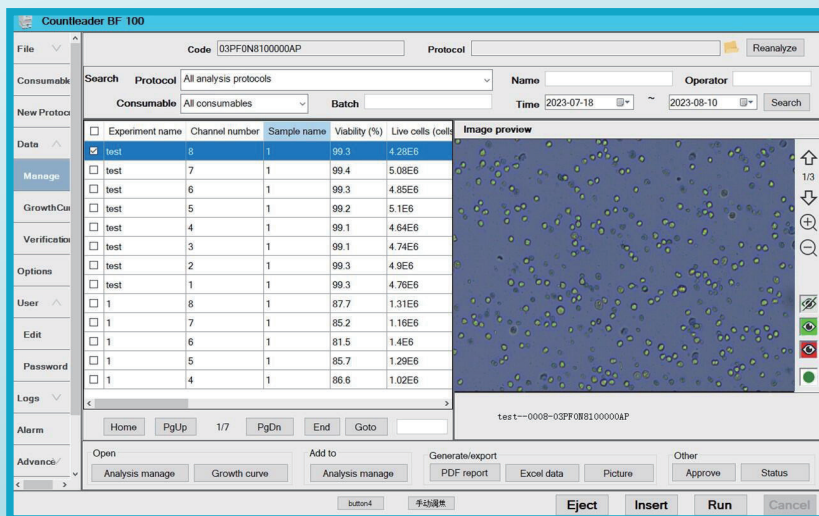
Antibody R&D and Production

Cancer Cells

Vaccine R&D and Production

Stem Cells

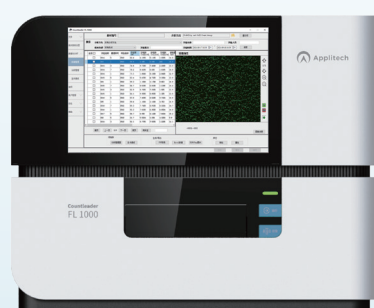
and more



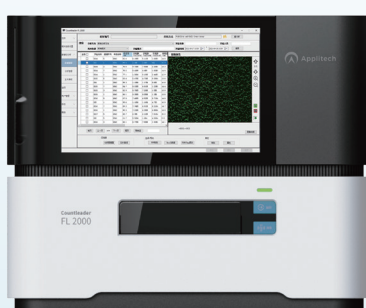
# Technical Specifications

|                            |                                                |
|----------------------------|------------------------------------------------|
| Detection Mode             | Brightfield (Trypan Blue)                      |
| Consumables                | FL8-slides                                     |
| Throughput                 | 8                                              |
| Loading Volume             | 15µl                                           |
| Analysis Time              | 1-2 minutes/8samples, up to 15 seconds/ sample |
| Cell Type                  | Mammalian cells , tumor cells, insect cells    |
| Cell Concentration Range   | $5 \times 10^4 \sim 3 \times 10^7$ (cells/ml)  |
| Optimal Cell Concentration | $5 \times 10^5 \sim 1 \times 10^7$ (cells/ml)  |
| Accuracy                   | CV <5%                                         |
| Data Output Format         | PDF、Excel、TIFF                                 |
| Cell Viability             | 0-100%                                         |
| Dimensions                 | 22*28*30.5 cm (W×D×H)                          |
| Weight                     | 8kg                                            |

## Countleader Cell Counter Series



Countleader FL 1000



Countleader FL 2000



Countleader BF 100



Countleader FL 100

| Model               | Consumable               | Throughput | Analysis Method    |
|---------------------|--------------------------|------------|--------------------|
| Countleader FL 1000 | FL8-slides               | 8          | Trypan Blue / AOPI |
| Countleader FL 2000 | FL24-plate<br>FL8-slides | 24/8       | Trypan Blue / AOPI |
| Countleader BF 100  | FL8-slides               | 8          | Trypan Blue        |
| Countleader FL 100  | FL8-slides               | 8          | AOPI               |



**Applitech**



**Applitech Biological Technology Co., Ltd.**

☎ +86 400 8816 128

🌐 [www.applitechbio.com](http://www.applitechbio.com)

✉ [biotech@applitechbio.com](mailto:biotech@applitechbio.com)

**Guangzhou** No.483,XingnanRoad,Panyu,Guangzhou,P.R.China 5511442

TEL: +8620 34821111 FAX: +8620 34820098

**Beijing** Floor A11 Genertime International Center, Jia No.3 Yong An Dong Li,Beijing,P.R. China 100022

TEL: +8610 57917860 FAX: +8610 57917851

**Shanghai** Room2101-2107,No.175,Wangjiao Plaza, Yan'an Road East ,Huangpu District, Shanghai,P.R.China 200002

TEL: +8621 31262111 FAX: +8621 50945180

**Xi'an** Room1 650,Shaanxi Convention and Exhibition International building,Chang 'an north road ,Beilin Districk,Xi'an,P.R China 710061

TEL: +8629 81579159 FAX: +8629 87233732

**Chengdu** Room 421, 4th Floor, Zhifu Plaza, No. 3059, Section 1, South Zizhou Avenue, Tianfu New Area, Chengdu, P.R. China 610200

TEL: +8628 85250313 FAX: +8628 85350748