

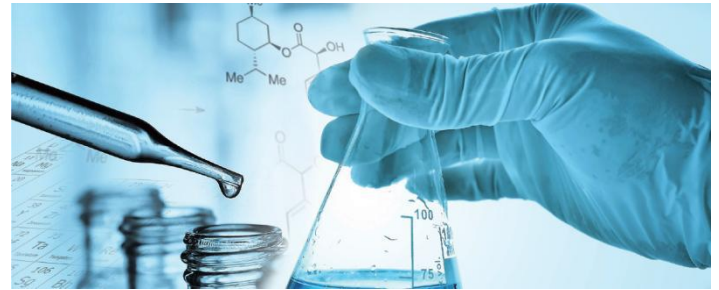
SHAKER INCUBATOR



STACKABLE SHAKING INCUBATOR SERIES

INTRODUCTION

ZHICHU shaker incubator is ideal for application in the fields of cell biology, bio-similar production, crystallography, genomics and new drug development, etc.



It can provide the prime solution for cell culture by maximizing your lab space with availability in single, double, or triple-tier configurations. Each unit offers independent temperature and speed control, catering to your unique needs.



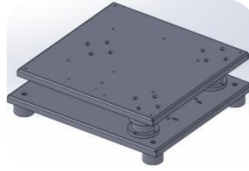
FEATURES

Ergonomic Interface



7" LCD touch screen is designed to show all critical parameters simultaneously including temperature, speed, time, applied on model ZQZY-CF8/CS8/CS9

Stable and Durable Triple-eccentric Drive



Triple-eccentric counterbalanced drive provides vibration and trouble free operation for years. Driven by brushless DC motor, which can start from 10rpm with large torque, high load bearing, quiet and precise control.

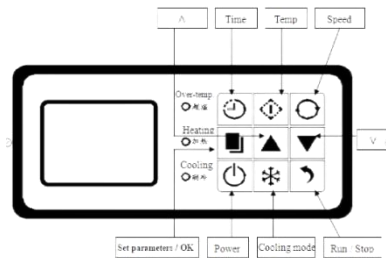
Interior Mirror SUS 304 Stainless Steel



The inner chamber is also seamless welded, where the bottom can be washed thoroughly

LCD screen with membrane switch

Model ZQZY-A8/B8/C8



Easy to clean the chamber bottom



The bottom of the chamber can be washed thoroughly without dead ends. (except model ZQZY-C8/CF8)

Programmable Photosynthetic Light Bank (optional)



Can be fitted with LED modules for cultivation of phototropic organisms, and allows programming of time cycles and variable light intensity. Available colour red/blue/white

Real-time Humidity Control (Optional)



An optional external humidity control module is used to replenish water and vaporizes it to high-temperature steam, reaching humidity up to 90%.



ZQZY-CR8/CSR8



ZQZY-CF8W (Reciprocating)

SciLab.
INTERNATIONAL

www.scilab-international.com

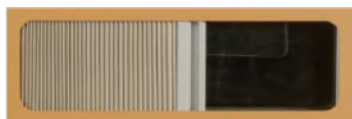


OTHER FEATURES

🔬 CFC-free compressor
High quality and low noise imported CFC-free compressor with refrigerant R134a/R600a ensure refrigeration effect.

🔬 Unique timing defrost function
1~250 seconds can be freely set. Defrost interval is adjustable from 30 to 600 minutes, ensuring that the evaporator does not freeze when running at low temperatures for a long time.

🔬 Embedded darkening curtain(optional)
It can be stretched repeatedly and not easily damaged, completely protected from light to avoid the impact of external light on culture.



🔬 Reciprocating amplitude (optional)
It can also accept reciprocating amplitude as demand in high speed , ranging from 10 rpm to 120rpm with linear throw 50mm or 100mm.(Built in Model ZQZY-AF8W/BF8W/CF8W)

🔬 25 mm access port
For adding instrumentation or additional probes.

🔬 Be enough for 5L Erlenmeyer flask
The height from top of platform is 465mm, which is enough for 5L erlenmeyer flask. (Only model ZDZY-BS8/BF8 series)

🔬 Slide-out platform
The shaker platform can be freely pulled out for easy loading and unloading of shake flasks, hold by stainless steel or plastic clamps, dedicated sticky mats, or spring grids.

🔬 UV sterilization
A UV light sited next to the circulation fan works to sterilize the air in the incubator.
Option timed UV sterilization(Built in model ZQZY-CSR8/CR8)

🔬 Arc angle design for whole machine body
Model ZQZY-CSR8/CR8 series

🔬 Safety feature

- Acceleration -Deceleration circuit prevents sudden starts and stops and minimizes mechanical damage for longer shaker life.
- Automatic restart after power Interrupt with non-volatile setpoint memory to keep studies running smoothly.
- Open door/lid Cut-Off Switch stops shaker motion when door/lid is open
- Over-temperature alarm, shuts off heaters if high limit is exceeded.

🔬 Automatic humidification by humidifier(optional)
The high-temperature heating module instantly turns water droplets into sterile steam and enters the chamber through the air duct circle, automatically and accurately controlling the humidity of the incubator.



ZDZY-BS8/BF8(for 5L)



SPECIFICATIONS

Product Name	Stackable Shaking Incubator									
Model	ZQZY-A8 (1 tier) ZQZY-B8 (2 tiers) ZQZY-C8 (3 tiers)	ZQZY-AF8(1 tier) ZQZY-BF8(2 tiers) ZQZY-CF8(3 tiers)	ZQZY-AF8W(1 tier) ZQZY-BF8W(2 tiers) ZQZY-CF8W(3 tiers)	ZQZY-AR8(1 tier) ZQZY-BR8(2 tiers) ZQZY-CR8(3 tiers)	ZDZY-AF8(1 tier) ZDZY-BF8(2 tiers)	ZQZY-AS8(1 tier) ZQZY-BS8(2 tiers) ZQZY-CS8(3 tiers)	ZQZY-ASR8(1 tier) ZQZY-BSR8(2 tiers) ZQZY-CSR8(3 tiers)	ZDZY-AS8(1 tier) ZDZY-BS8(2 tiers)	ZQZY-AS9(1 tier) ZQZY-BS9(2 tiers) ZQZY-CS9(3 tiers)	
Shaking Speed Range	10-300rpm		10-120rpm		10-300rpm					
Shaking Control Accuracy	±1rpm									
Shaking way	Orbital		Reciprocating		Orbital					
Shaking diameter	φ25mm, φ50mm(option)		Φ50mm, φ100mm(option)		φ25mm, φ50mm(option)					
Temp. Range	Cooling 4°C~60°C(at 23°C~25 °C)									
Temp. Accuracy	±0.1°C									
Temp. Uniformity	±1°C(at 37°C)		±0.8°C(at 37°C)			±0.5°C(at 37°C)				
Inner chamber material	Mirror SUS 304 stainless steel									
Photosynthesis Illumination	Optional, Up to 16,000 lux, adjustable 1%~100% with 1% increment									
Humidity Control Range	Optional , Ambient humidity~90% R.H									
Display Screen	LCD screen with membrane switch		LCD (7" Touch Screen)							
Interior structure	Arc angle (R)									
UV light	Built in (Option timed)		Timed		Built in(Option timed)		Timed		Built in(Option timed)	
Air circulation	Forced air circulation									
Parameter Control	P.I.D Microprocessor									
Timer Range	0-999.9 hrs.									
Noise Level	<55dB		<60dB		<55dB					
Power Source	AC220±10% (110V is optional) 50~60Hz									
Each Platform Size(W×D,mm)	928*530		880*530		928*530			1000*530		
Internal effective height	365mm		310mm		365mm	465mm	345mm		465mm	345mm
Each Inner Chamber Capacity	282L	282L		347L	306L		372L	339L		
Overall Dimension (W*D*H,mm)	1360*830*630 1360*830*1185 1360*830*1740	1360*845*630 1360*845*1185 1360*845*1740		1360*845*730 1360*845*1390	1360*845*630 1360*845*1185 1360*845*1740		1360*845*750 1360*845*1430	1430*845*630 1430*845*1185 1430*845*1740		
Net Weight(kg)	205 398 584	206 399 585	270 489 688	206 399 585	210 412	210 400 586		218 428	272 506 728	
Certifications										



ACCESSORIES



Universal platform with s.s. clamps



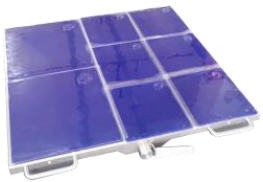
Stainless steel clamps (50ml~5000ml)



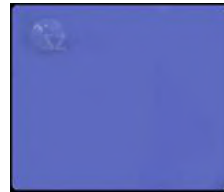
Universal platform with plastic clamps



Plastic clamps (100ml~3000ml)



Universal platform with sticky mat



Sticky mat



Universal platform with spring



Microplate holder (three spaces)



Platform with column clamps for 96 well plates



Test tube rack



Shaker Capacities Using Dedicated Platform

Model			ZQZY-A8	ZQZY-AF8 ZQZY-AR8	ZQZY-AF8W	ZQZY-AS8 ZQZY-ASR8	ZDZY-AF8 ZDZY-AS8	ZQZY-AS9
Microplate holder (four spaces)			6	6	6	6	6	7
Test tube rack			7	7	7	7	7	9
Erlenmeyer Flask	50ml	Stainless steel	135	135	126	135	135	153
	100ml	Stainless steel	91	91	84	91	91	98
		Plastic	84	84	84	84	84	98
	125ml	Stainless steel	91	91	84	91	91	98
	150ml	Stainless steel	84	84	84	84	84	91
	200ml	Stainless steel	66	66	60	66	66	72
		Plastic	60	60	54	60	60	66
	250ml	Stainless steel	66	66	60	66	66	66
		Plastic	60	60	45	60	60	66
	300ml	Plastic (bottom ϕ 110mm)	40	40	40	40	40	45
		Plastic (bottom ϕ 114mm)	32	32	28	32	32	36
	500ml	Stainless steel	45	45	40	45	45	45
		Plastic	23	23	24	23	23	28
	1000ml	Stainless steel	28	28	24	28	28	28
		Plastic	15	15	-	15	15	15
	2000ml	Stainless steel	15	15	-	15	15	18
Plastic		11	11	-	11	11	14	
3000ml	Stainless steel	11	11	-	11	11	14	
	Plastic	8	8	-	8	8	11	
2800ml	Stainless steel	8	8	-	8	8	11	
5000ml	Stainless steel	-	-	-	-	8	-	
Dimensions of single platform(mm)			928*530	928*530	880*530	928*530	928*530	1000*530

